

# Hardwick Primary School Weekly Newsletter

12th December 2025



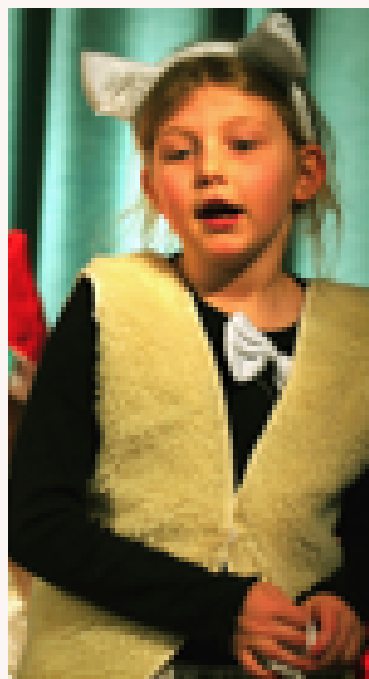
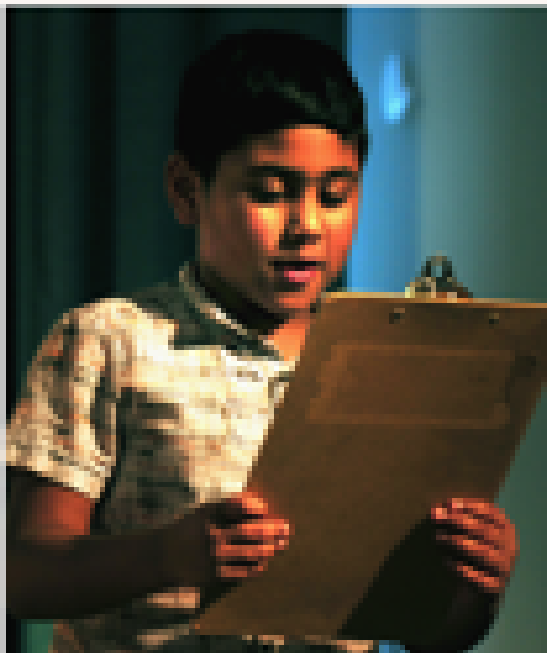
*This week at Hardwick...*

*What a show-stopping week of performances!*

Our youngest children truly shone as they performed their nativity, Hey Ewe. With beautiful signing and confident acting and speaking, it was a wonderful way to begin our Christmas festivities.

Later in the week, our oldest children took to the stage to perform a selection of wonderful Christmas songs. We were treated to incredible solo and duet performances, singing from our Theatre Club choir, and a delightful rendition of a Christmas classic on the glockenspiels by Year 4.

It was a truly special week, with every child included and every performance celebrated.





**Move photos to follow  
next week!**

# Important Notices for Next Week...

**Monday:**

**Christmas Jumper day & Christmas Lunch**



**Wednesday:**

Whole School trip to the **Pantomime!**

We will be **opening the gates earlier at 8.45am.**

We will be leaving **promptly at 9.15**



**Thursday:**

**Elf Run @ 2.30pm**

**Children must return to their classrooms when the Elf run is complete.**

Children will be dismissed as usual from classroom door / gates / playground.



**Last Day**

# Southgate Food Bank

Southgate Community Centre will be opening their doors on **Saturday 20th December, from 11:00am–1:00pm**, offering their Christmas food bank along with other essential items.

There will be no questions asked, and everyone is welcome to come along and pick up what they need.

We are grateful to have such a caring and supportive community that looks out for one another, especially at this time of year.

Southgate's Multi - Community Food Bank  
and Winter Hardship Initiative.

## FOOD BANK

**Saturday  
20th December  
NEED IT, WANT IT,  
TAKE IT  
HELP YOURSELF  
NO questions  
asked.  
11am - 1pm**

Baby formula - Nappies  
Long life milk - Long life Juice  
- Squash  
Tinned beans - soup -  
Vegetables - Meat - Fish - Pies -  
Cooking sauces  
Rice pudding - fruit - Custard  
Pasta - Rice  
Tea - Coffee - Sugar  
Christmas confectionary  
Toiletries.  
Even unwanted good quality  
toys & gifts.

# Trainers or Wellies in School



From January, all children must keep a **pair of trainers or wellies** in school. Children will change their shoes at break and lunchtime to help keep the school clean and free from mud.

- Trainers are required for using the apparatus for health and safety reasons. Children cannot use the apparatus in school shoes or wellies.
- Children cannot go onto the field without trainers or wellies.

Children do not need to bring both; however, if they wish to use the apparatus, they must have trainers in school.

Thank you for your support.



## Online Safety

It is often difficult to know where to start or how to find the information you need. Please see below for further details and links to key websites which you may find useful. Both the Internet Matters website and the NSPCC website are excellent resources for families, offering guidance on specific games and apps, as well as clear information on age restrictions, safety features, and how to set up parental controls.

[Internet Matters - search for individual guides.](#)

[NSPCC - guides, tips and guides on social media apps, online games and chat apps](#)



# Future Events



JOIN US FOR OUR SPONSORED

**Elf Run**



THUR | 18 DEC | 2:30PM

PARENTS AND CARERS WELCOME - GET SPONSORED TO JOIN IN THE FUN!

ELF HAT INCLUDED FOR EVERY CHILD PARTICIPATING!

**Expect last minute changes if the weather is not favourable!**



# What's on next week?



## Monday:

- Christmas Jumper Day
- Christmas Lunch
- Rock Steady Music
- Rock Solid - lunch time club
- Guitars

## Tuesday:

- Swimming - Year 5
- Chess Club - lunchtime
- Craft Club (Y4) - lunchtime
- Y4 Music with Mr Waters
- Gymnastics Club (Y1 - Y6) after school

## Wednesday:

- **Whole School Trip to PANTO. School Gates open @ 8.45am**

## Thursday

- Musical Theatre Club (KS2) - lunch time club
- Netball Club (Y4, 5 & 6) after school
- **Elf Run @ 2.45pm**

**LAST DAY for Children**

## Friday

- PD Day

---

## CONTACT

(01284) 755 424

[office@hardwickprimary.org.uk](mailto:office@hardwickprimary.org.uk)

[www.hardwickprimaryschool.co.uk](http://www.hardwickprimaryschool.co.uk)



[Facebook](#)



[Instagram](#)



[All Saints Schools Trust](#)

# Key Dates

## Autumn Term:

### December:

15<sup>th</sup> Dec - Christmas Lunch & Christmas Jumper Day

17<sup>th</sup> Dec - Whole School Trip to Theatre Royal - Pantomime

18<sup>th</sup> Dec - Elf Run @ 2.30pm

18<sup>th</sup> Dec - Last Day

19<sup>th</sup> Dec & 5<sup>th</sup> Jan - PD Days for staff

**Christmas Holiday - Thursday 18<sup>th</sup> Dec - Monday 5<sup>th</sup> January**

## Spring Term:

### January:

**Tuesday 6<sup>th</sup> January - First Day Back**

### February:

6<sup>th</sup> Feb - Number Day - Dress up as something number / maths related

10<sup>th</sup> Feb - Safer Internet Day

**Half Term - Monday 16th Feb - Friday 20<sup>th</sup> Feb**

# Key Dates

## **March:**

5<sup>th</sup> March - World Book Day (No dressing up, wooden spoons sent home to decorate)

9<sup>th</sup> - 13<sup>th</sup> March - Y6 SATS Mocks

12<sup>th</sup> March - STEM Share Day

(Grown ups invited: KS2 - morning & EYFS & KS1 -afternoon)

17<sup>th</sup> March - Y6 SATS Parent Information Sessions @ 3.30pm

20<sup>th</sup> March - Red Nose Day (Children to wear something red / red accessories including the red nose day merchandise)

25<sup>th</sup> March - Parents' Evening

26<sup>th</sup> March - Parents' Evening

Bikeability Dates - TBC

**Easter Holiday - Monday 30<sup>th</sup> March - Friday 10<sup>th</sup> April**

## **April:**

**Monday 13<sup>th</sup> April - First Day Back**

## **May:**

11<sup>th</sup> May - Y6 SATS Week

20<sup>th</sup> May - Y3 & Y4 - Afternoon Performance @ 2pm

21<sup>st</sup> May - Y3 & Y4 - Evening Performance @ 5pm

**Half Term - Monday 25th May - Friday 29th May**

# Key Dates

## June:

1<sup>st</sup> June - Y4 Multiplication Check begins

8<sup>th</sup> June - Y1 Phonics Screening Begins

18<sup>th</sup> June - Sports Day (timings TBC)

29<sup>th</sup> June - 2<sup>nd</sup> July - Arts Week

## July:

1<sup>st</sup> July - Transition Morning (Move up to next class)

3<sup>rd</sup> July - Art Gallery Open to grown ups @ 3.30 - 4.30pm

8<sup>th</sup> July - Y5 & Y6 Afternoon Performance @ 2pm

9<sup>th</sup> July - Y5 & Y6 Evening Performance @ 5pm

16<sup>th</sup> July - Y6 Leavers Assembly

17<sup>th</sup> July - Last Day

20<sup>th</sup> July - PD Day

**Please note that more dates may be added as events are planned throughout the year.**

**If any dates change or are added we will aim to give as much notice as possible.**